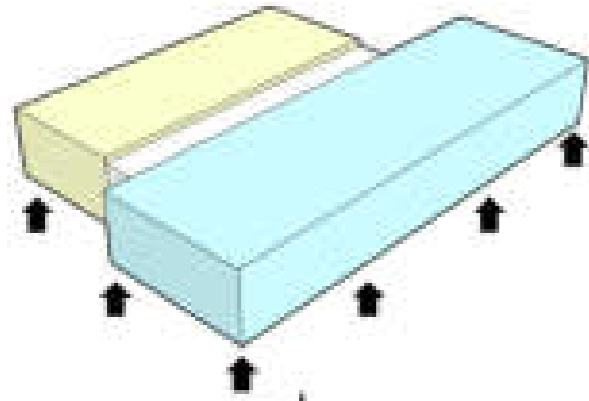


Preliminary Analysis / Sketch Design



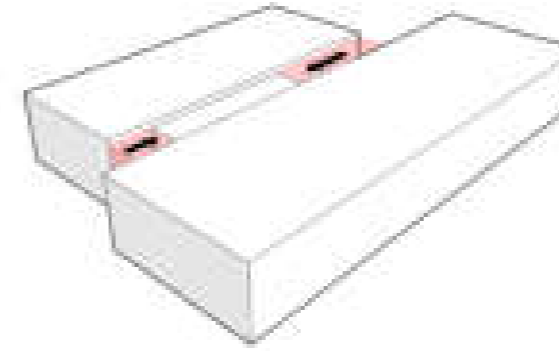
Having prepared massing studies for that initial option we elected to revise our architectural strategy, in favour of a scheme with reduced massing and scale, which would attempt to hug the landscape and sit lower to the horizon.





I
TWO BLOCKS

The geometry of the building is arranged with two main 'blocks', elevated slightly off the ground in order to minimise the impact on the island's surface.



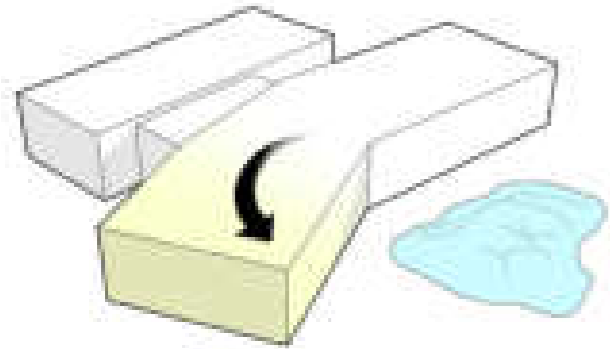
II
THE CONNECTOR BLOCK

The middle section, connecting the two main blocks is reduced in size in order to provide clear visual separation, and to frame views, as well as naturally guide the user in to the building.



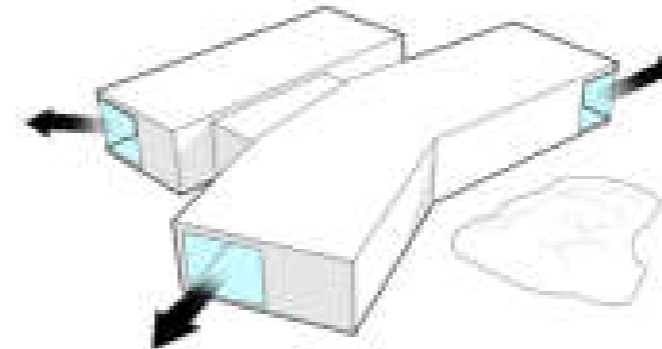
V
MODEST PRESENCE

The building is settled in to the landscape in an understated way; barely protruding over the horizon when seen from the water. This diagram reflects the view shown in the photograph of Page 7 (top left).



III
WORKING AROUND THE LANDSCAPE

The larger block is 'cranked' around a nearby outcrop which helps the building sit better within its environment, minimise the impact on it, and allows the internal arrangement to focus on opening up to the best views to the north and south.



IV
THE VIEWS

The building is orientated in a way which best utilises the breathtaking views all around, including sea views to the south, and views on to Lismore towards the east and north-east. Large window openings help bring light deep in to the plan as well as connect the building users with the environment directly from the key internal spaces.

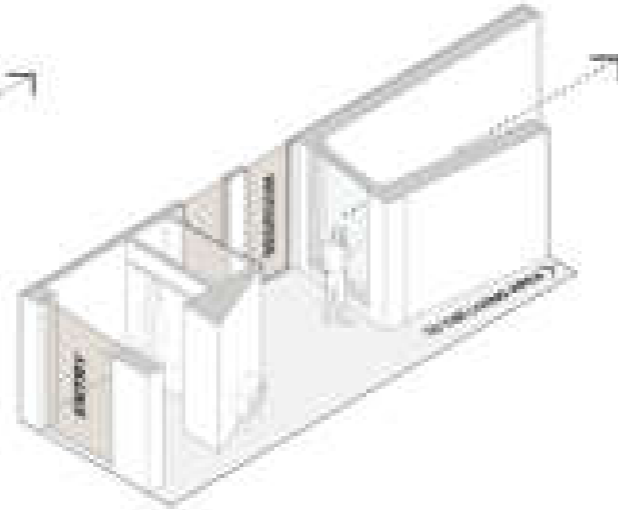
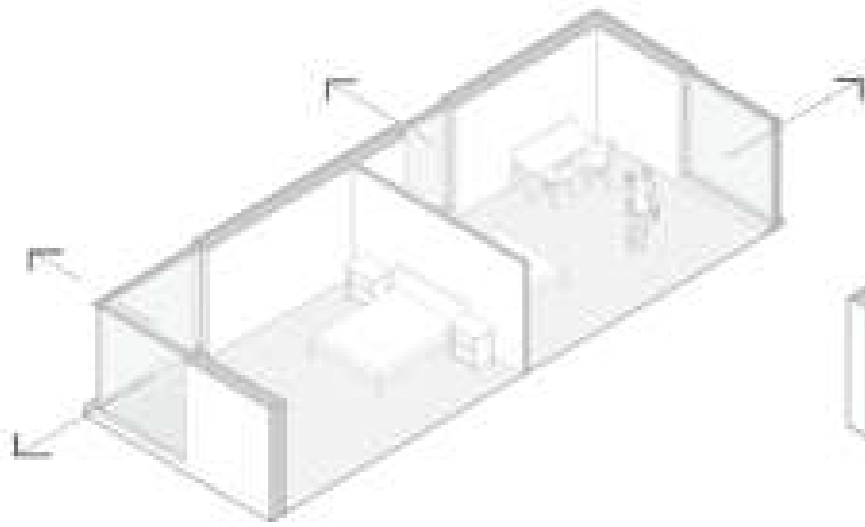
These diagrams formalise the architectural steps we followed in trying to understand and clarify the revised scheme; they identify the ideas that have been particularly important to the design.

We hope that these diagrams can clearly explain the method and critical ideas we've followed through the design process, all of which has been in an effort to ensure that the architecture is dynamic and exciting, while constantly pushing to ensure our intervention is appropriate and sensitive to the landscape.

BEDROOMS:
 - lots of light
 - beautiful unobstructed
 - quietness

CIRCULATION BLOCK:
 - main heart of the house
 - beautiful light space
 - access into the house
 - deep threshold

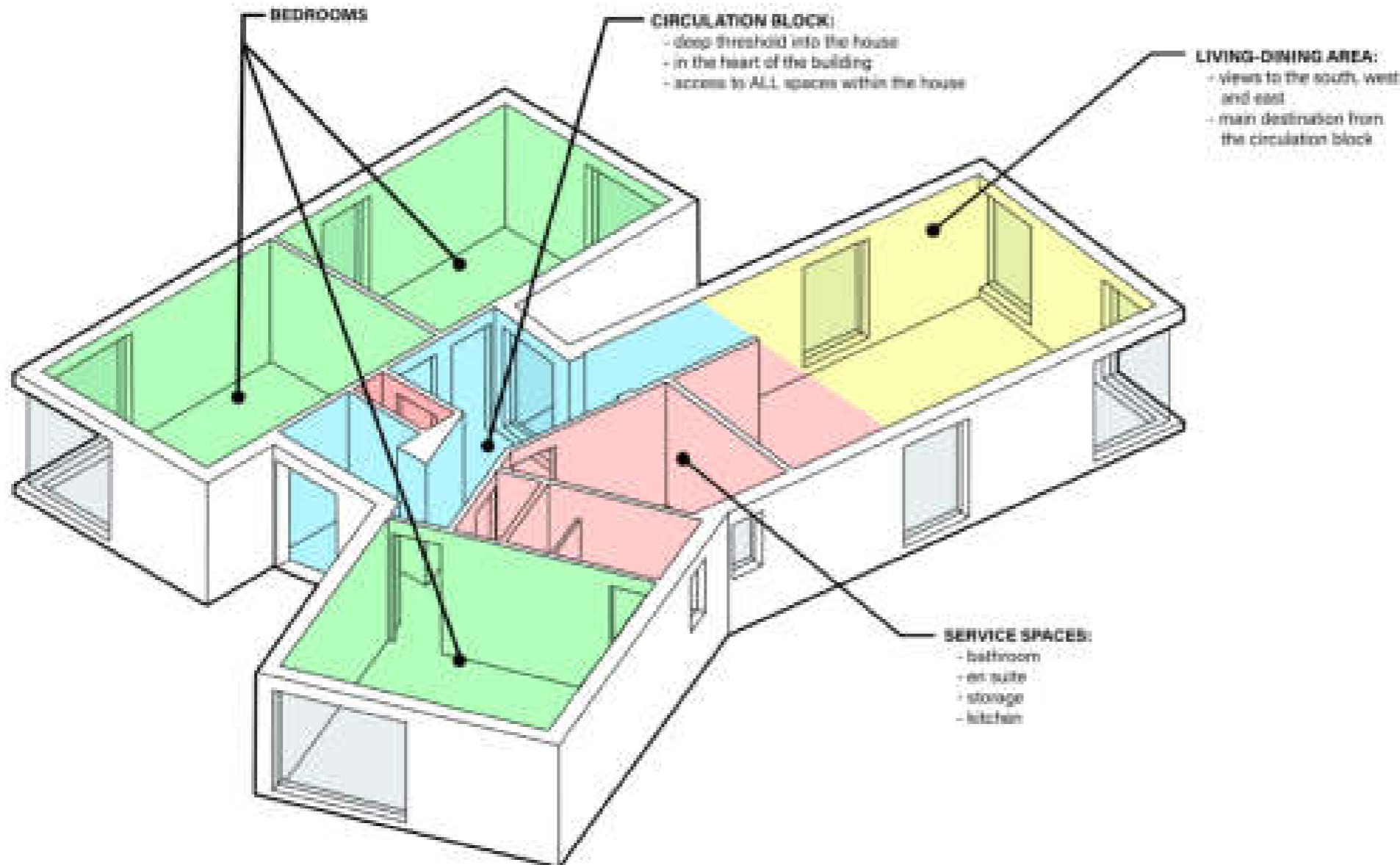
LIVING AREA:
 - open plan living-dining kitchen
 - access to the outdoors
 - view of landscape



Developed Proposal

These diagrams seek to demonstrate the relationships and qualities of the internal spaces which are created in the building, and show how these work in synergy with the broader architectural preoccupations described in the previous pages.

We feel that these are great spaces, which make the most of the stunning situation of the building.



Developed Proposal

Illustrative renders of our proposal.



The central circulation space, which feels deliberately enclosed, which connects the main spaces.



The view upon entering the main living and dining area - giving a clear glimpse of the sea.

Developed Proposal

Illustrative renders of our proposal.



Throughout the design process we've been focussed on creating internal spaces which connect with the landscape beyond in a poised and considered manner.

Developed Proposal

Illustrative renders of our proposal.



An illustrative view of the approach to the building, showing the principle which was described in the diagram on Page 11.



The proposed building, resting gently on the landscape of the island.

Design Statement (June 2022)

www.movingstillarchitecture.com

jamie@movingstillarchitecture.com

**Moving
Still
Architecture**